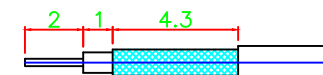
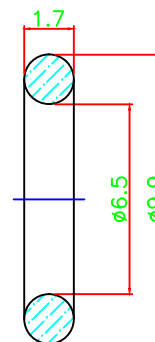
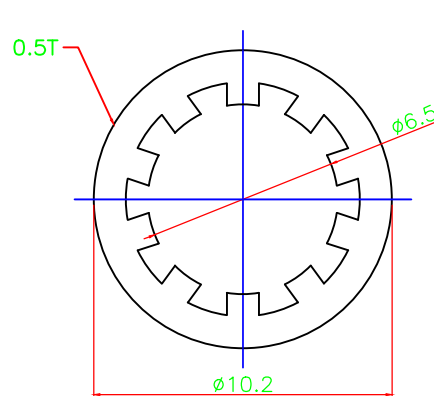
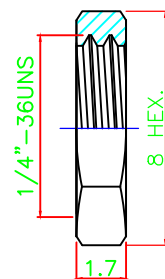
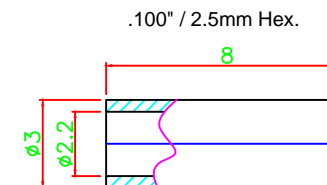
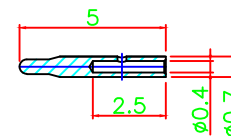


Solder or .021" / 0.55mm Hex.

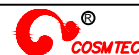


NO	Description	Material	Finish
1	Body	Brass	Gold
2	Insulator	Teflon	—
3	Contact	P.H.Bronze	Gold
4	Bullet pin	Brass	Gold
5	Nut	Brass	Gold
6	Washer	Brass	Gold
7	Gasket	Silicone	—
8	Ferrule	Brass	Gold

Dimensions Are in Millimeters  
Unless Otherwise Specified  
Tolerances



0.5-6	= ± 0.2
6-30	= ± 0.4
30-120	= ± 0.6
120-315	= ± 1.0
315-1000	= ± 1.6
1000-2000	= ± 2.4



COSMTEC RESOURCES CO., LTD

DRAFT

CHECKED

APPROVED

The Drawing Contains Information That Is Proprietary To Cosmtect Resources Co., Ltd  
And Should Not Be Used Without Written Permission. www.cosmtect.com

NO	Items	Specs
1	Impedance	50Ω
2	Frequency	DC~6GHz
3	V.S.W.R	1.3 Max
4	Working Voltage	500V
5	Dielectric Withstanding Voltage	AC 1500V
6	Insulation Resistance	5000 MΩ Min
7	Contact Resistance	Center contact ≤ 3.0mΩ Outer contact ≤ 2.0mΩ
8	Temperature Range	-55°C ~ +165°C
9	Mating	Screw-On
10	Material/Finish	All RoHS Compliant

Part No. S-043H-178

Title: SMA JACK BULKHEAD CRIMP FOR  
RG-178 CABLE (PIN-IN-PIN)

DATE: APR/28/2022

SCALE: 1:1

UNIT: m/m

REV: A