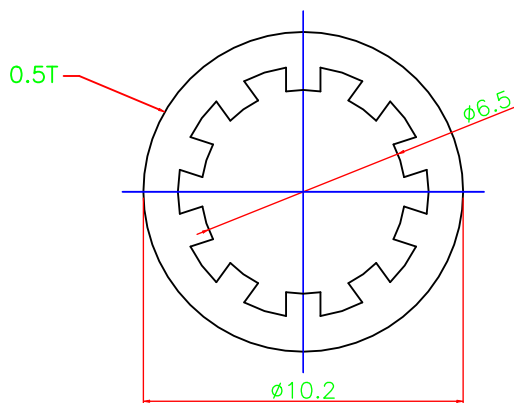
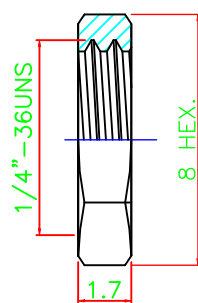
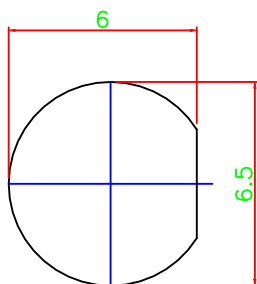


PCB MOUNTING HOLES



NO	Description	Material	Finish
1	Body	Brass	Gold 5U"
2	SQ. Body	Brass	Gold 5U"
3	Insulator	Teflon	—
4	Contact	Brass	Gold 30U"
5	Insulator	Teflon	—
6	Nut	Brass	Gold 5U"
7	Washer	Brass	Gold 5U"

Dimensions Are In Millimeters
Unless Otherwise Specified
Tolerances



0.5–6	= ± 0.2
6–30	= ± 0.4
30–120	= ± 0.6
120–315	= ± 1.0
315–1000	= ± 1.6
1000–2000	= ± 2.4



COSMTEC RESOURCES CO., LTD

DRAFT

CHECKED

APPROVED

The Drawing Contains Information That Is Proprietary To Cosmtec Resources Co., Ltd
And Should Not Be Used Without Written Permission.
www.cosmtec.com

NO	Items	Specs
1	Impedance	50Ω
2	Frequency	DC~12.5 GHz
3	V.S.W.R	1.25 Max
4	Working Voltage	500V
5	Dielectric Withstanding Voltage	AC 1500V
6	Insulation Resistance	5000 MΩ Min
7	Contact Resistance	Center contact ≤ 3.0mΩ Outer contact ≤ 2.0mΩ
8	Temperture Range	–55°C ~ +165°C
9	Mating	Screw–On
10	Durability	500 Matings
11	Material/Finish	All RoHS Compliant

Part No. S-037-23-RP

Title: SMA JACK RP SOLDER BULKHEAD
R/A FOR PCB MOUNT

DATE: JUN/28/2023 SCALE: 1:1 UINT m/m REV A