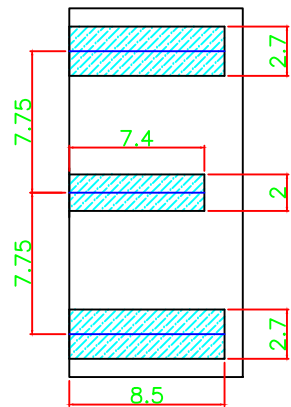
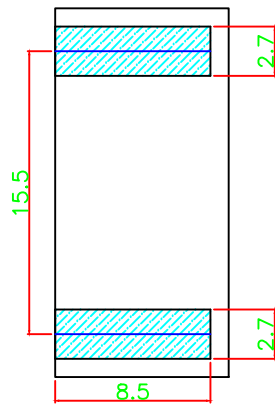


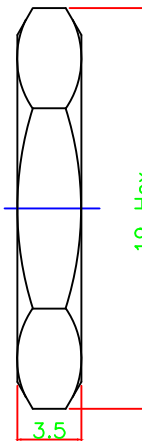
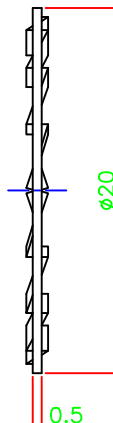
RECOMMENDED PCB LAYOUT



TOP



BOTTOM



1	Impedance	50Ω
2	Frequency	DC~11GHz
3	V.S.W.R	1.25 Max
4	Working Voltage	1,400V
5	Insulation Resistance	5000 MΩ Min
6	Contact Resistance	Center contact ≤ 2.0mΩ Outer contact ≤ 0.5mΩ
7	Temperature Range	-55°C ~ +165°C
8	Mating	Screw-On
10	Material/Finish	All RoHS Compliant

NO	Description	Material	Finish
1	Body	Brass	Nickel
2	Contact	P.H. Bronze	Gold
3	Insulator	Teflon	-
4	Bullet	Brass	Gold
5	Nut	Brass	Nickel
6	Washer	Brass	Nickel

Dimensions Are in Millimeters  
Unless Otherwise Specified  
Tolerances

0.5-6 = ± 0.2
6-30 = ± 0.4
30-120 = ± 0.6
120-315 = ± 1.0
315-1000 = ± 1.6
1000-2000 = ± 2.4

ROHS COMPLIANT

**COSMTEC** COSMTEC RESOURCES CO., LTD

DRAFT      CHECKED      APPROVED

The Drawing Contains Information That Is Proprietary To Cosmtec Resources Co., Ltd And Should Not Be Used Without Written Permission.      www.cosmtec.com

Part No.	N-066-8			
Title:	N JACK SOLDER BULKHEAD EDGE MOUNT			
DATE:	DEC/19/2020	SCALE:	1:1	UNIT: m/m
REV	A			