

N Male Clamp Connector

RF Connector Technical Data Sheet **N-001**

Configuration

- N Male Connectr
- 50 Ohms
- RG-213 / RG-214 / LMR400 / CFD400 / SPUMA400

Features

- Max VSWR of 1.30 : 1 up to 6 GHz
- N Interface compliant with MIL-STD-348A

Applications

- General Purpose Test

Electrical Specifications

Description	Minimum	Typical	Maximum	Units
Frequency Range	DC		6	GHz
VSWR			1.30 : 1	



N Male Clamp Connector
RF Connector Technical Data Sheet
N-001

Weight

Description	Connector
Type	N Male
Polarity	Standard
Interface Specification	MIL-STD-348A MIL-C-39012
Mating Cycles	500
Hex Size	-
Mating Torque	-
Coupling Proof Torque, Min	-

Material Specifications

Connector 1		
Description	Material	Plating
Type	N Male	-
Contact	Brass	Gold
Insulation	PTFE	-
Outer Conductor	-	-
Body	Brass	Nickel
Gasket	Silicone	-
Coupling Nut	Brass	Nickel

Environmental Specifications
Temperature

Operating Range -60 to +165 deg C

Compliance Certifications

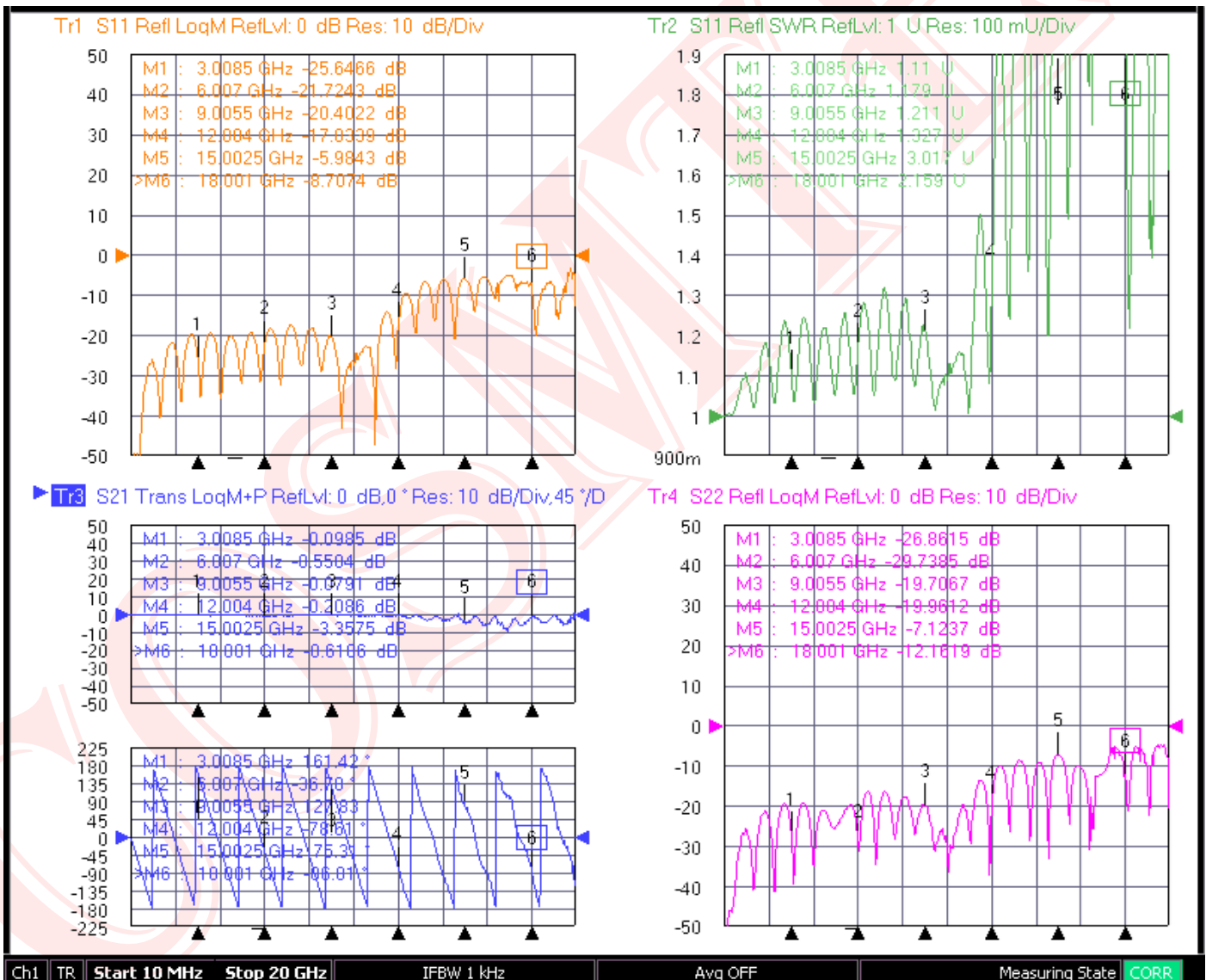
- RoHS Compliant Yes

Plotted and Other Data

Notes :

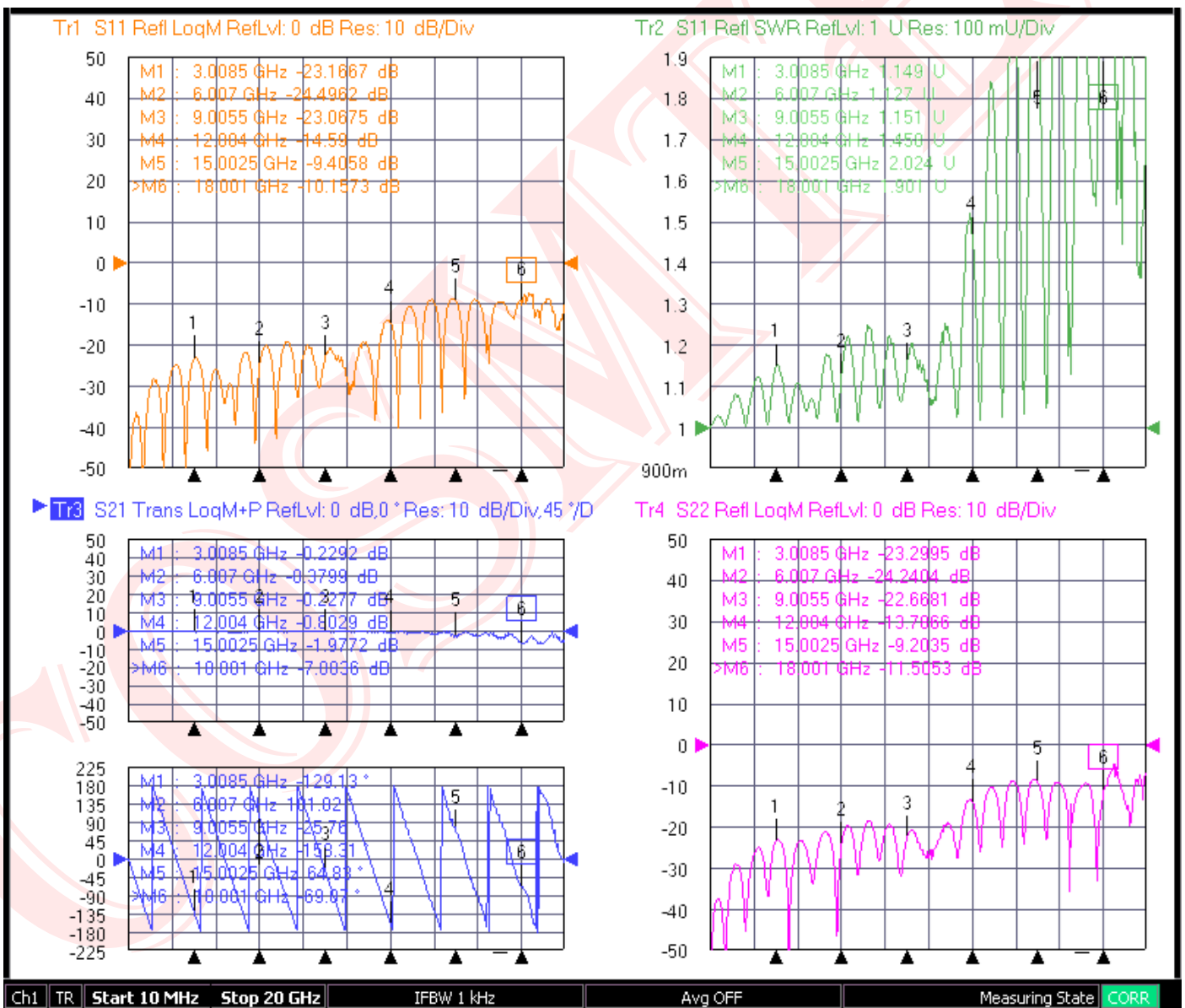
N Male Clamp Connector

RF Connector Technical Data Sheet N Male - Male Link with CFD400 Coaxial Cable



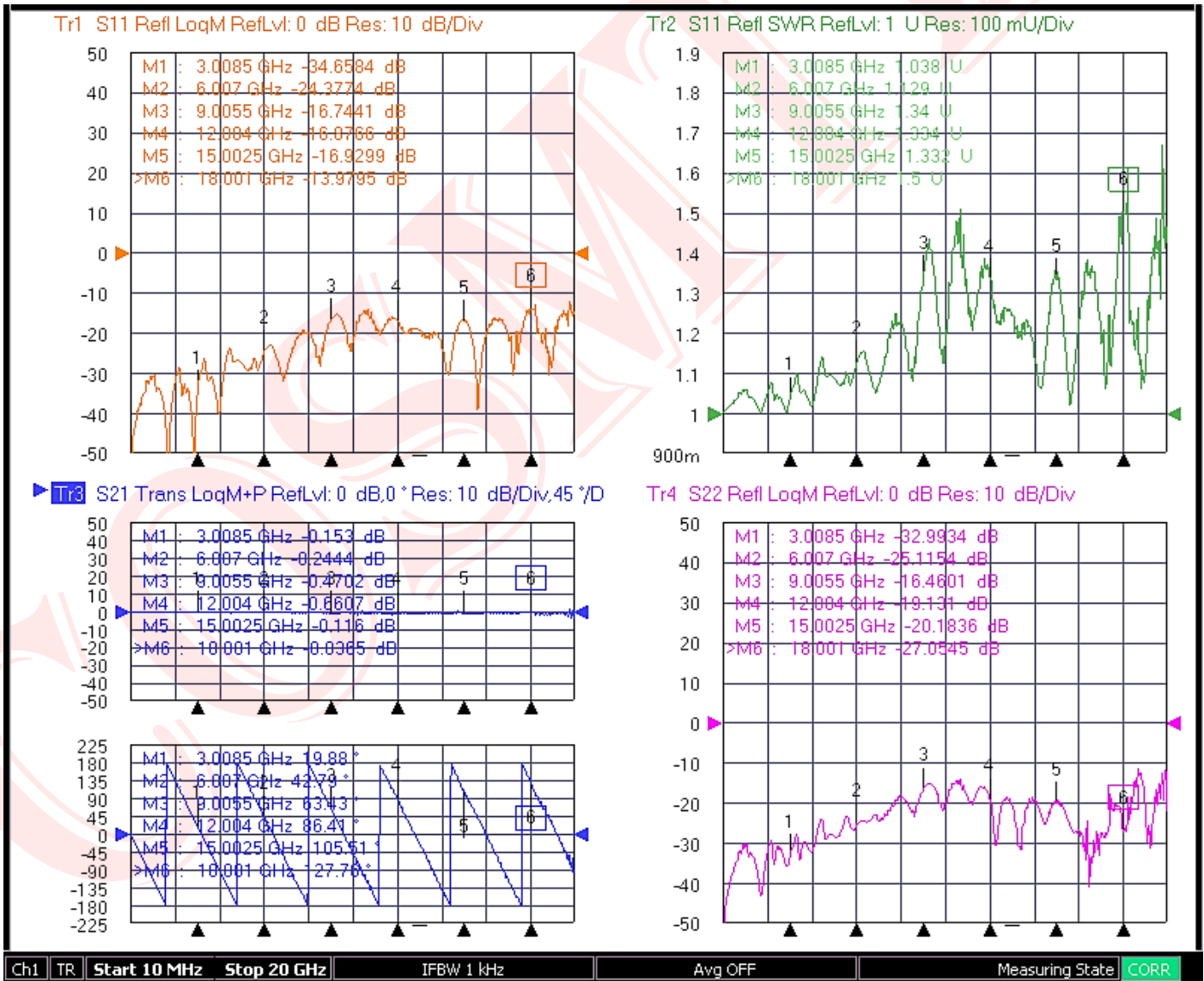
N Male Clamp Connector

RF Connector Technical Data Sheet N Male - Male Link with SPUMA400 Coaxial Cable



N Male Clamp Connector

RF Connector Technical Data Sheet N Male - Male Link with TIME'S 400 Coaxial Cable

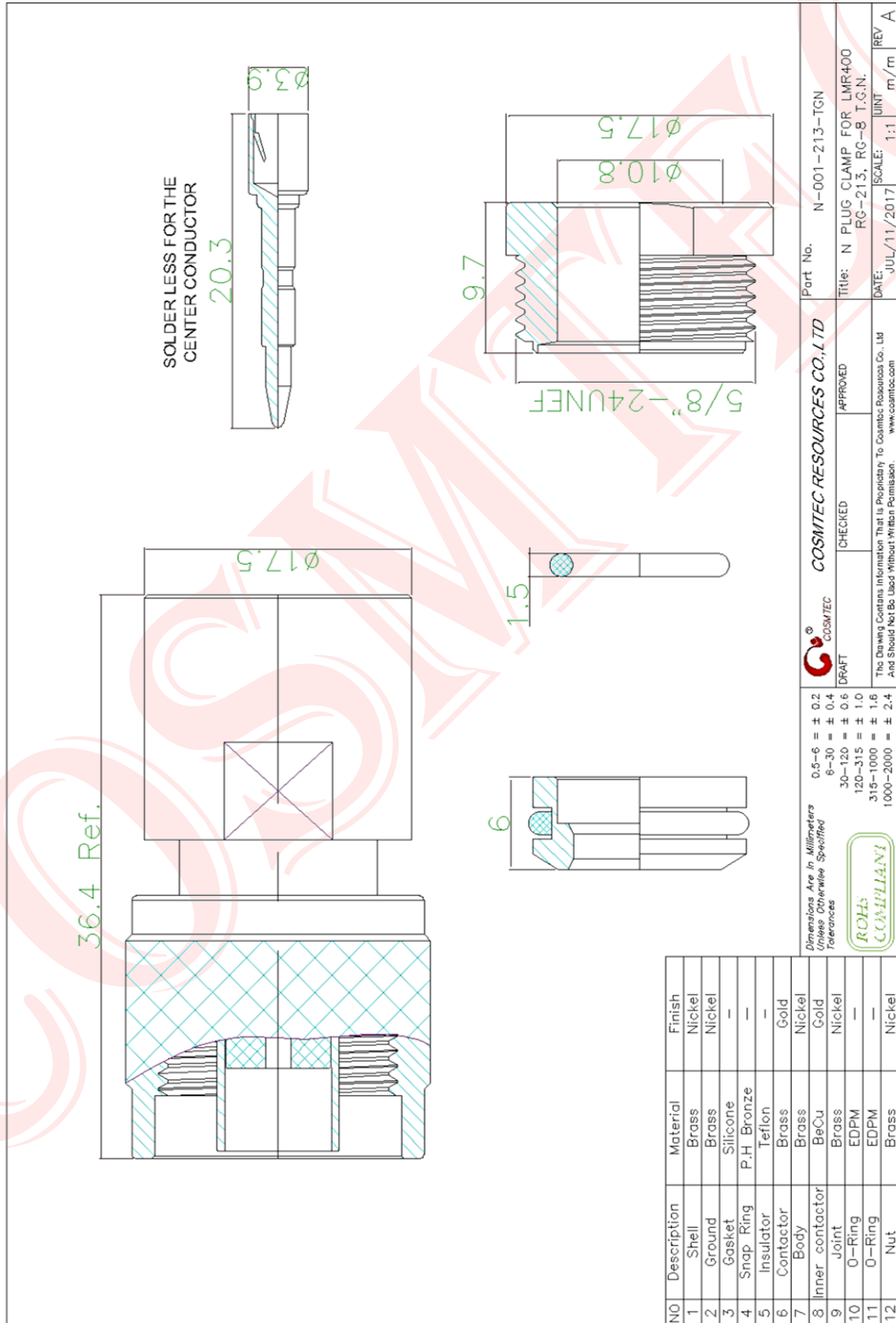


N Male Clamp Connector

RF Connector Technical Data Sheet

N-001

RG-213 / RG-214 / LMR400 / CFD400 / SPUMA400



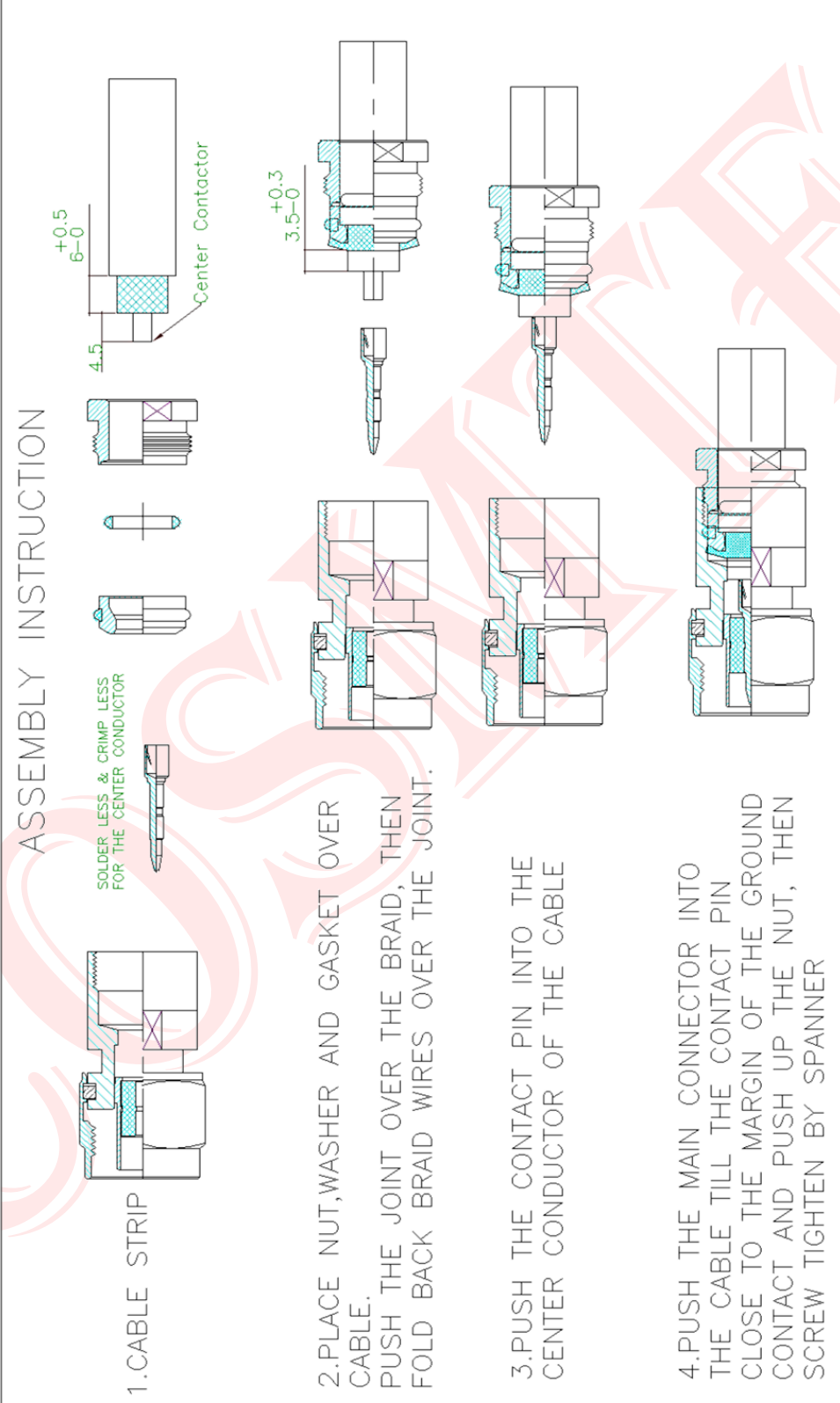
N Male Clamp Connector

Cable Assembly Instruction

N-001

RG-213 / RG-214 / LMR400 / CFD400 / SPUMA400

ASSEMBLY INSTRUCTION



1. CABLE STRIP

2. PLACE NUT, WASHER AND GASKET OVER CABLE. PUSH THE JOINT OVER THE BRAID, THEN FOLD BACK BRAID WIRES OVER THE JOINT.

3. PUSH THE CONTACT PIN INTO THE CENTER CONDUCTOR OF THE CABLE.

4. PUSH THE MAIN CONNECTOR INTO THE CABLE TILL THE CONTACT PIN CLOSE TO THE MARGIN OF THE GROUND CONTACT AND PUSH UP THE NUT, THEN SCREW TIGHTEN BY SPANNER

Part No. N-001 (ASSEMBLY INSTRUCTION)


Title: N PLUG CALMR ASSEMBLY INSTRUCTION FOR LMR-400, RG-213, RG-214, CFD-400 & SPUMA-400

DATE: JUL/11/2017

SCALE: 1:1

UNIT: m/m

REV: A

 COSMTEC COSMTEC RESOURCES CO., LTD www.cosmtec.com	DRAFT	CHECKED	APPROVED	
	0.5-6 = ± 0.2 6-30 = ± 0.4 30-120 = ± 0.6 120-315 = ± 1.0 315-1000 = ± 1.6 1000-2000 = ± 2.4	ROHS COMPLIANT	The Drawing Contains Information That is Proprietary To Cosmtec Resources Co., Ltd And Should Not Be Used Without Written Permission	