

MCX Male to SMA Female Adapter
RF Adapters Technical Data Sheet
X-051

Configuration

- MCX Male Connectr 1
- SMA Female Connectr 2
- 50 Ohms

Features

- Max VSWR of 1.20 : 1 up to 6 GHz
- MCX Interface compliant with IEC 61169-36
- SMA Interface compliant with MIL-C-39012

Applications

- General Purpose Test

Electrical Specifications

| Description | Minimum | Typical | Maximum | Units |
|-----------------|---------|---------|----------|-------|
| Frequency Range | DC | | 6 | GHz |
| VSWR | | | 1.20 : 1 | |

Mechanical Specifications
Size

| | | |
|--------|------|------|
| Length | [mm] | 20.3 |
| Width | [mm] | 9.0 |
| Height | [mm] | 8.0 |
| Weight | [g] | 3.5 |

MCX Male to SMA Female Adapter
RF Adapters Technical Data Sheet
X-051

Weight

| Description | Connector 1 | Connector2 |
|----------------------------|--------------|-----------------------------|
| Type | MCX Male | SMA Female |
| Polarity | Standard | Standard |
| Interface Specification | IEC 61169-36 | MIL-STD-348A MIL-C-39012 |
| Mating Cycles | 500 | 500 |
| Hex Size | - | - |
| Mating Torque | - | - |
| Coupling Proof Torque, Min | - | - |

Material Specifications

| Description | Connector 1 | | Connector2 | |
|-----------------|------------------|---------|------------------|---------|
| | Material | Plating | Material | Plating |
| Type | MCX Male | - | SMA Female | - |
| Contact | Beryllium Copper | Gold | Beryllium Copper | Gold |
| Insulation | PTFE | - | PTFE | - |
| Outer Conductor | Phosphor Bronze | Gold | Brass | Gold |
| Body | Phosphor Bronze | Gold | - | - |
| Gasket | Silicone | - | - | - |
| Coupling Nut | - | - | - | - |

Environmental Specifications
Temperature

Operating Range -60 to +165 deg C

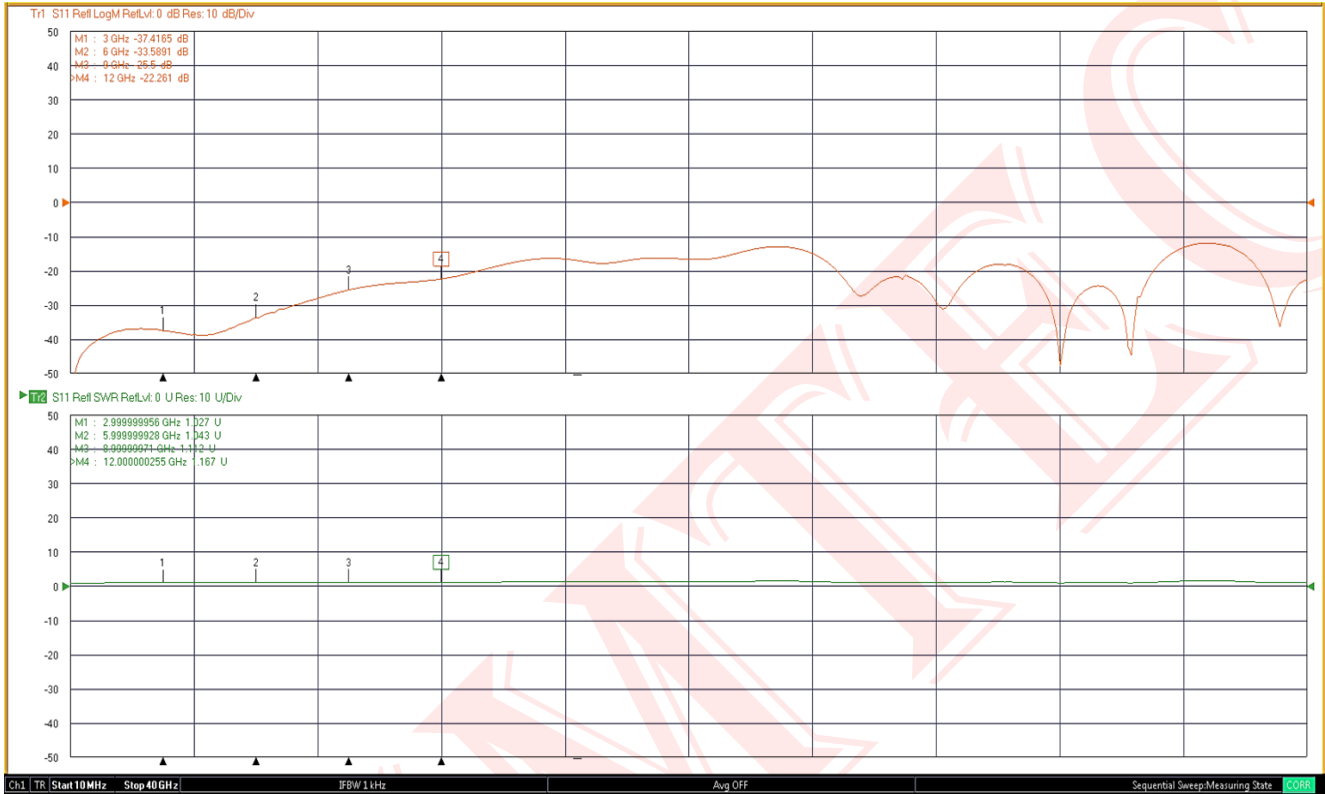
Compliance Certifications

- RoHS Compliant Yes

Plotted and Other Data

Notes :

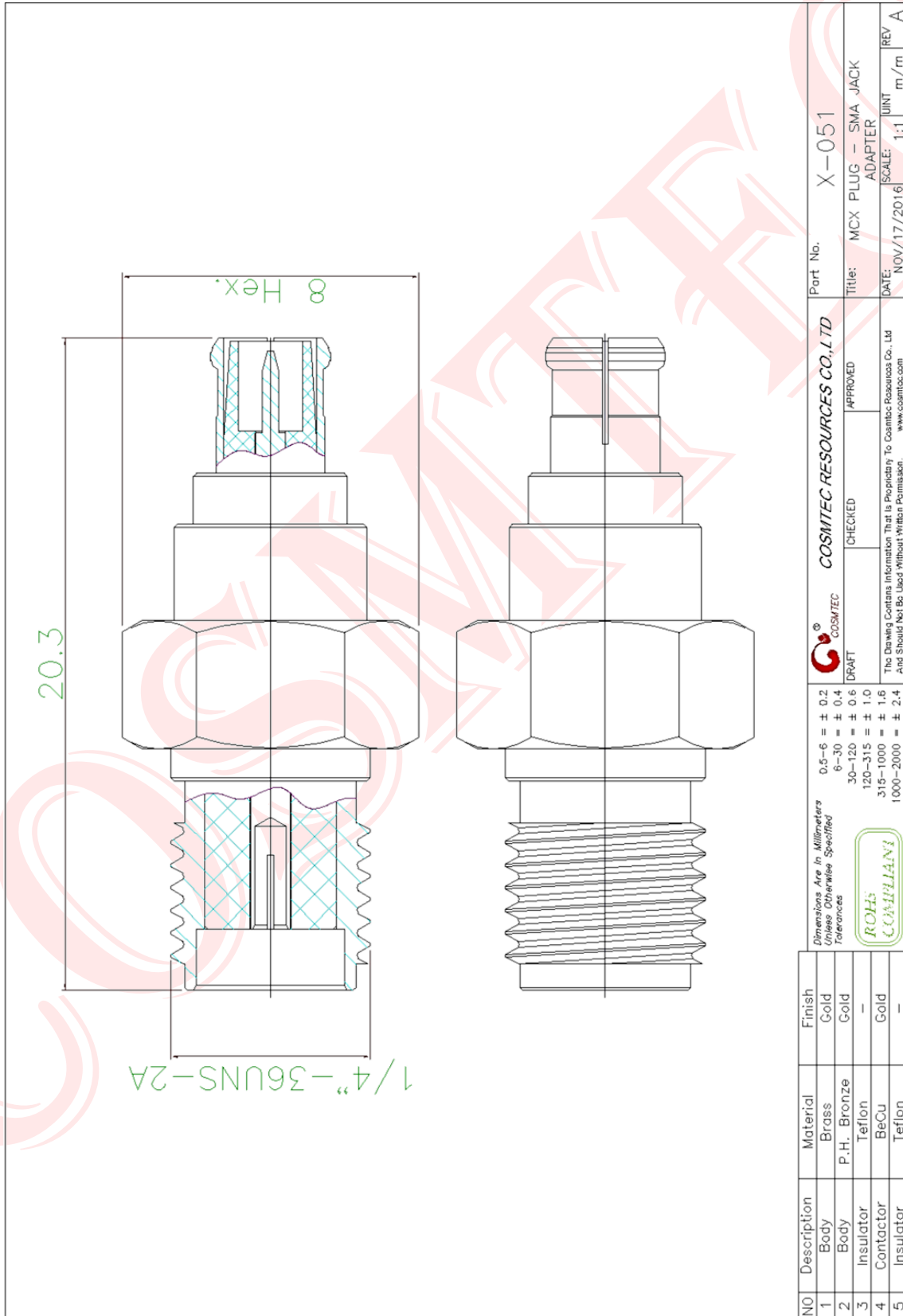
MCX Male to SMA Female Adapter
RF Adapters Technical Data Sheet
X-051



Notes :

This testing data report is both X-050 and X-051 combined for testing. The value is included two connectors of X-050 and X-051.

MCX Male to SMA Female Adapter
RF Adapters Technical Data Sheet
X-051



| | | | | | | | |
|--|-------------|------------------------------------|--------|-------------------|------------|-----------------|--------|
| Part No. X-051 | | Title: MCX PLUG - SMA JACK ADAPTER | | DATE: NOV/17/2016 | SCALE: 1:1 | UNIT: mm | REV: A |
| COSMTEC RESOURCES CO., LTD. | | APPROVED | | CHECKED | | APPROVED | |
| DRAFT | | CHECKED | | APPROVED | | APPROVED | |
| 0.5-6 = ± 0.2 | | 6-30 = ± 0.4 | | 30-120 = ± 0.6 | | 120-315 = ± 1.0 | |
| 315-1000 = ± 1.6 | | 1000-2000 = ± 2.4 | | | | | |
| Dimensions Are in Millimeters Unless Otherwise Specified | | TOLERANCES | | ROHS | | COMPLIANT | |
| NO | Description | Material | Finish | | | | |
| 1 | Body | Brass | Gold | | | | |
| 2 | Body | P.H. Bronze | Gold | | | | |
| 3 | Insulator | Teflon | - | | | | |
| 4 | Contact | BeCu | Gold | | | | |
| 5 | Insulator | Teflon | - | | | | |