

SMA Female to N Female Adapter
RF Adapters Technical Data Sheet
S-046-3

Configuration

- SMA Female Connector 1
- N Male Connector 2
- 50 Ohms

Features

- Max VSWR of 1.2 : 1 up to 18 GHz
- SMA Interface compliant with IEC 60169-15
- N Interface compliant with IEC 60169-16

Applications

- General Purpose Test

Electrical Specifications

Description	Minimum	Typical	Maximum	Units
Frequency Range	DC		18	GHz
VSWR			1.2 : 1	
Operating Voltage(AC)			1,000	Vrms
Inner Conductor DC Resistance			2	mOhms
Outer Conductor DC Resistance			0.5	mOhms
Insertion Resistance	5,000			mOhms

Mechanical Specifications

Size

Length	[mm]	34.7
Width	[mm]	16.0
Weight	[g]	28.0



SMA Female to N Female Adapter
RF Adapters Technical Data Sheet
S-046-3

Description	Connector 1	Connector2
Type	SMA Female	N Female
Polarity	Standard	Standard
Interface Specification	IEC 60169-15	IEC 60169-16
Mating Cycles	500	500
Hex Size	-	-
Mating Torque	-	-
Coupling Proof Torque, Min	-	-

Material Specifications

Description	Connector 1		Connector2	
	Material	Plating	Material	Plating
Type	SMA Female	-	N Female	-
Contact	Beryllium Copper	Gold	Beryllium Copper	Gold
Insulation	PTFE	-	PTFE	-
Body	Brass	CuSnZn	Brass	CuSnZn
Coupling Nut	-	-	-	-
Gasket	-	-	-	-
-	-	-	-	-

Environmental Specifications

Temperature

Operating Range -60 to +165 deg C

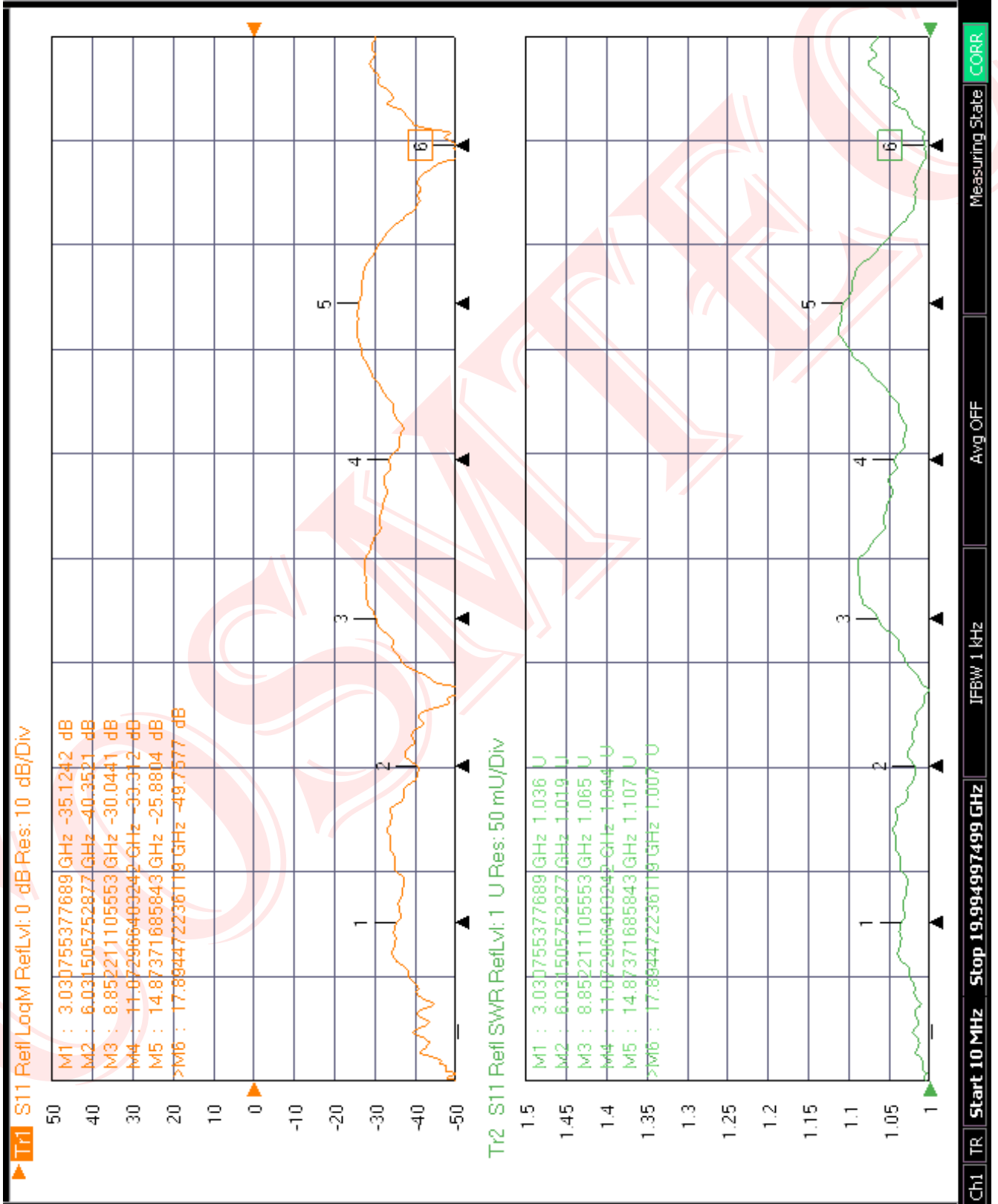
Compliance Certifications

- RoHS Compliant Yes

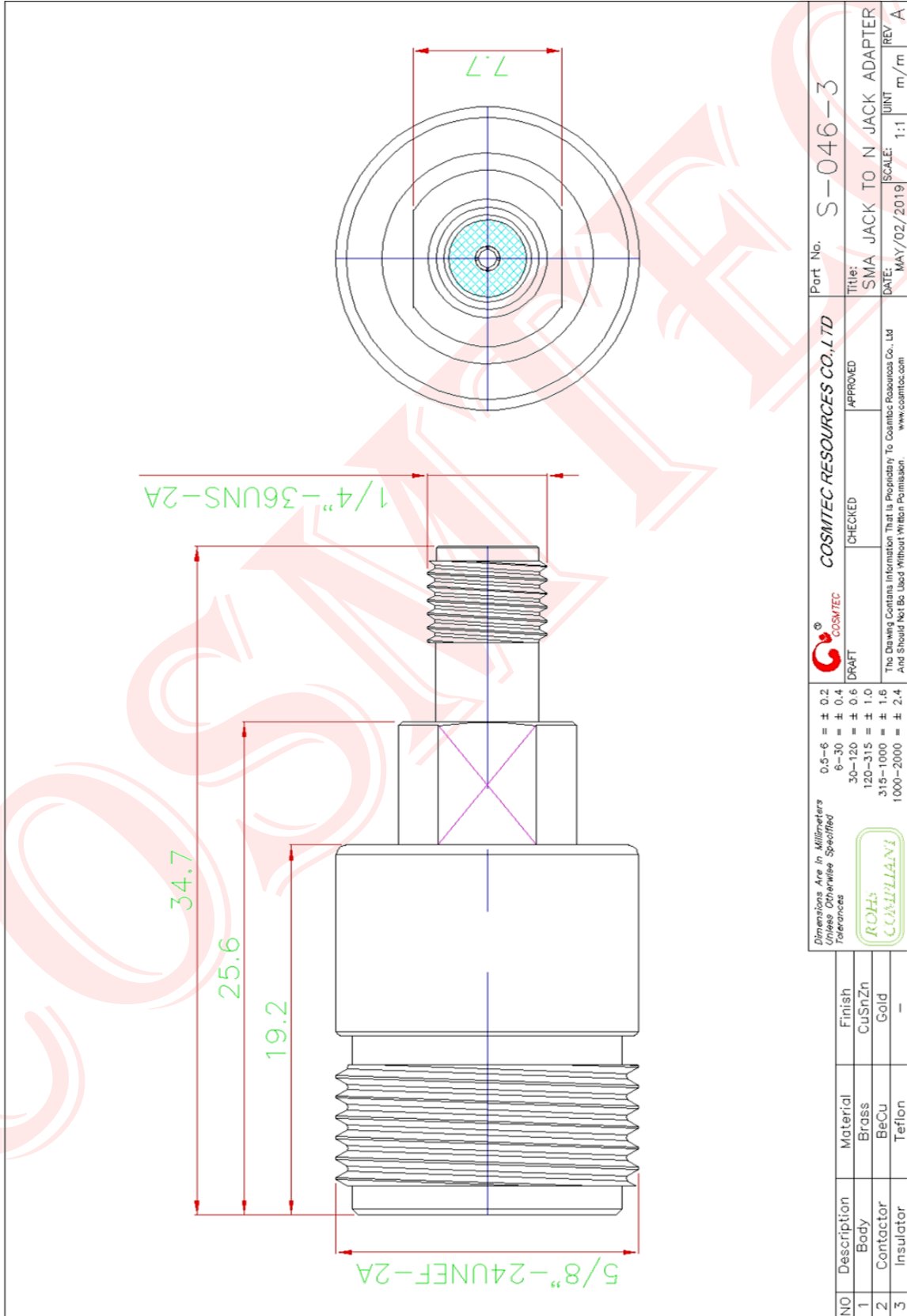
Plotted and Other Data

Notes :

SMA Female to N Female Adapter
RF Adapters Technical Data Sheet
S-046-3



SMA Female to N Female Adapter
RF Adapters Technical Data Sheet
S-046-3



Part No. S-046-3		Title: SMA JACK TO N JACK ADAPTER	
COSMTEC RESOURCES CO., LTD		DATE: MAY/02/2019	
DRAFT		SCALE: 1:1	
CHECKED		UNIT: m/m	
APPROVED		REV: A	
The Drawing Contains Information That is Proprietary To Cosmtec Resources Co., Ltd And Should Not Be Used Without Written Permission www.cosmtec.com			
Dimensions Are In Millimeters Unless Otherwise Specified Tolerances 0.5-6 ± 0.2 6-30 ± 0.4 30-120 ± 0.6 120-315 ± 1.0 315-1000 ± 1.6 1000-2000 ± 2.4		ROHS COMPLIANT	
NO	Description	Material	Finish
1	Body	Brass	CuSnZn
2	Contact	BeCu	Gold
3	Insulator	Teflon	-